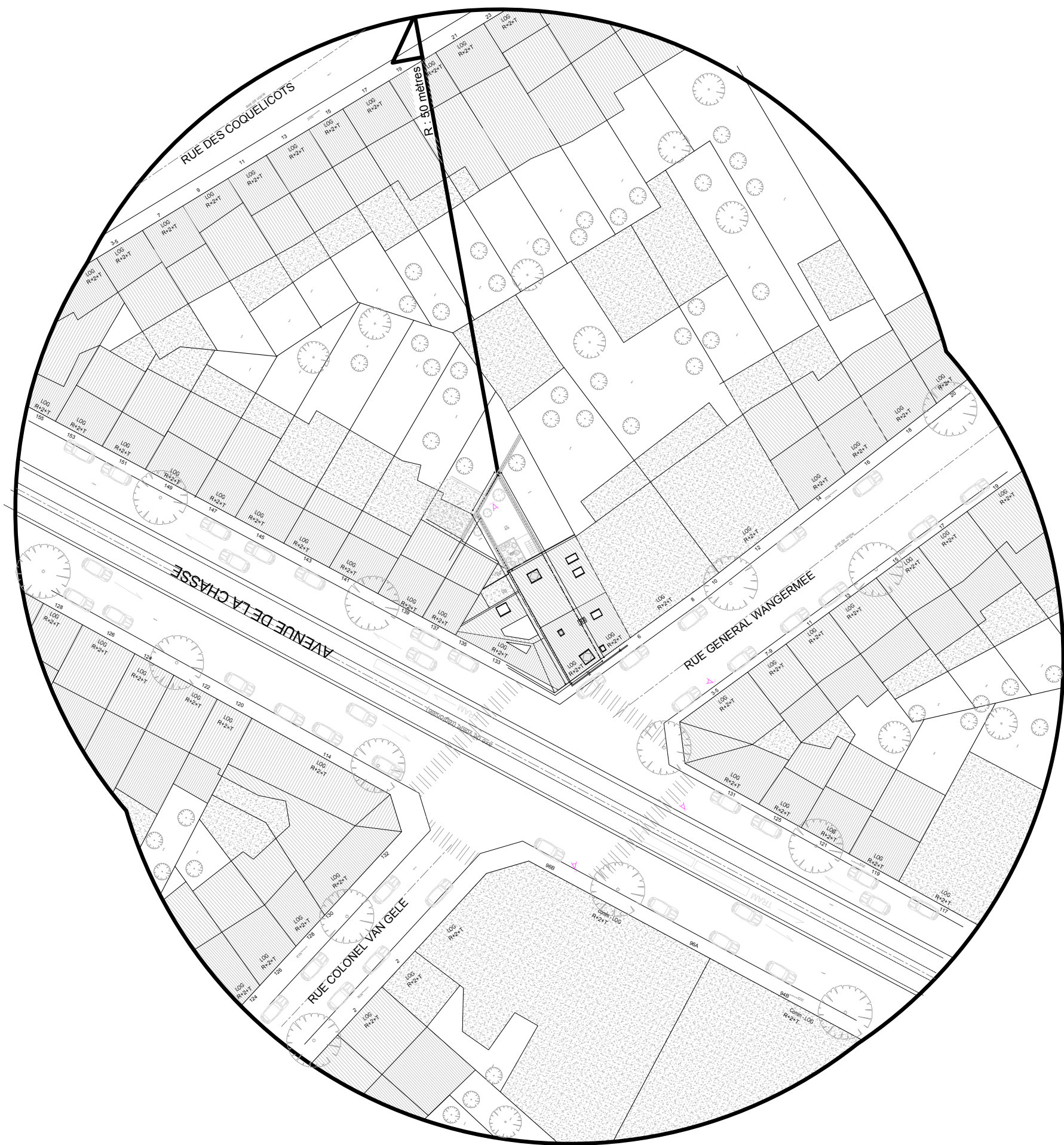
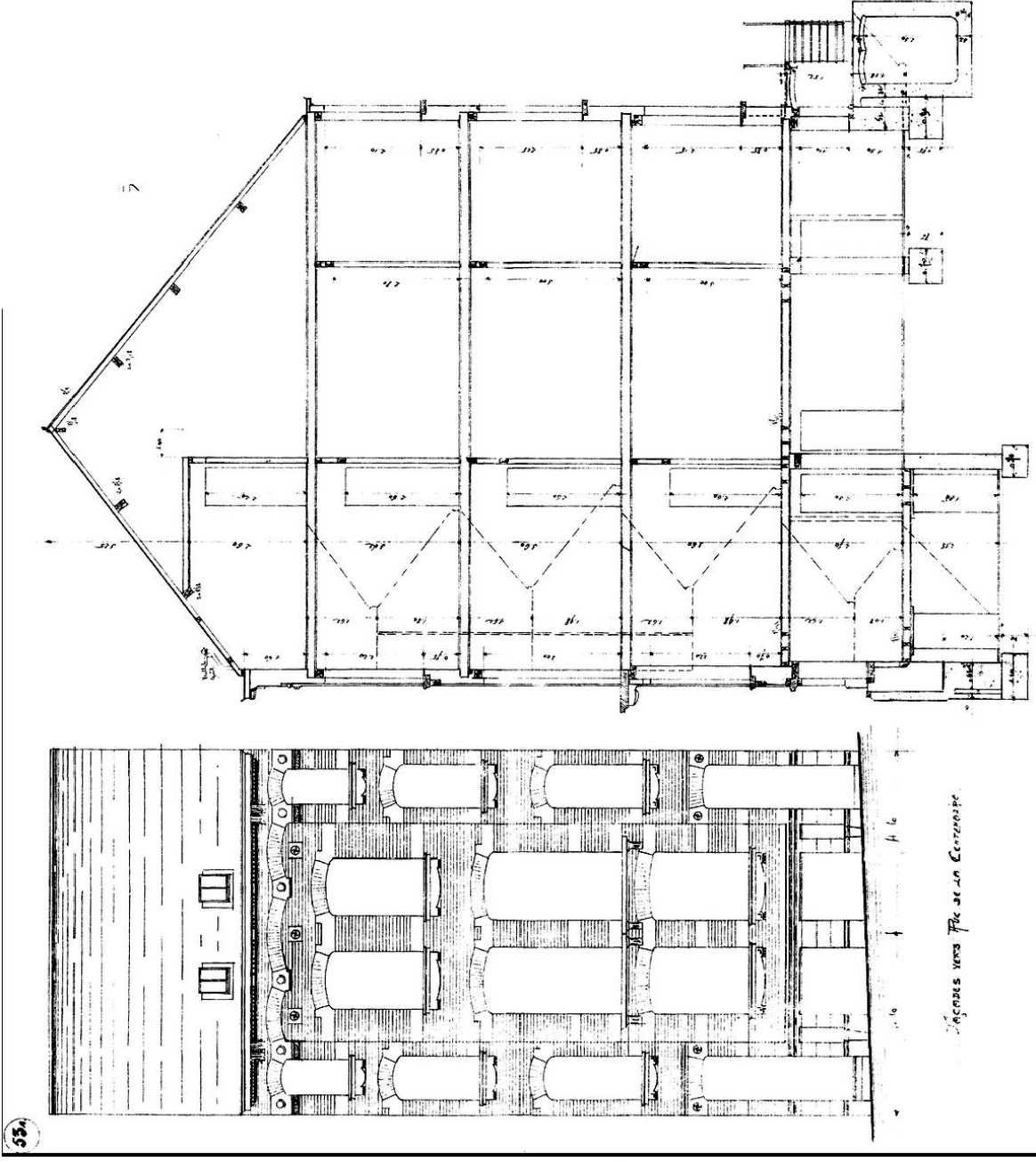
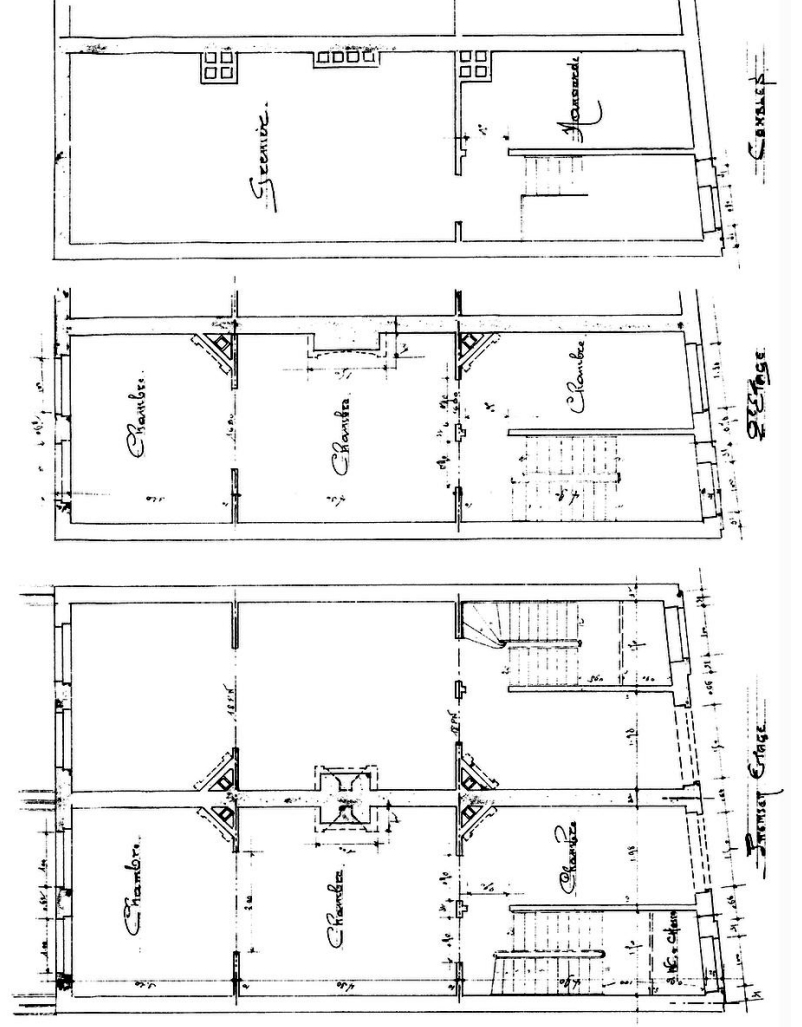
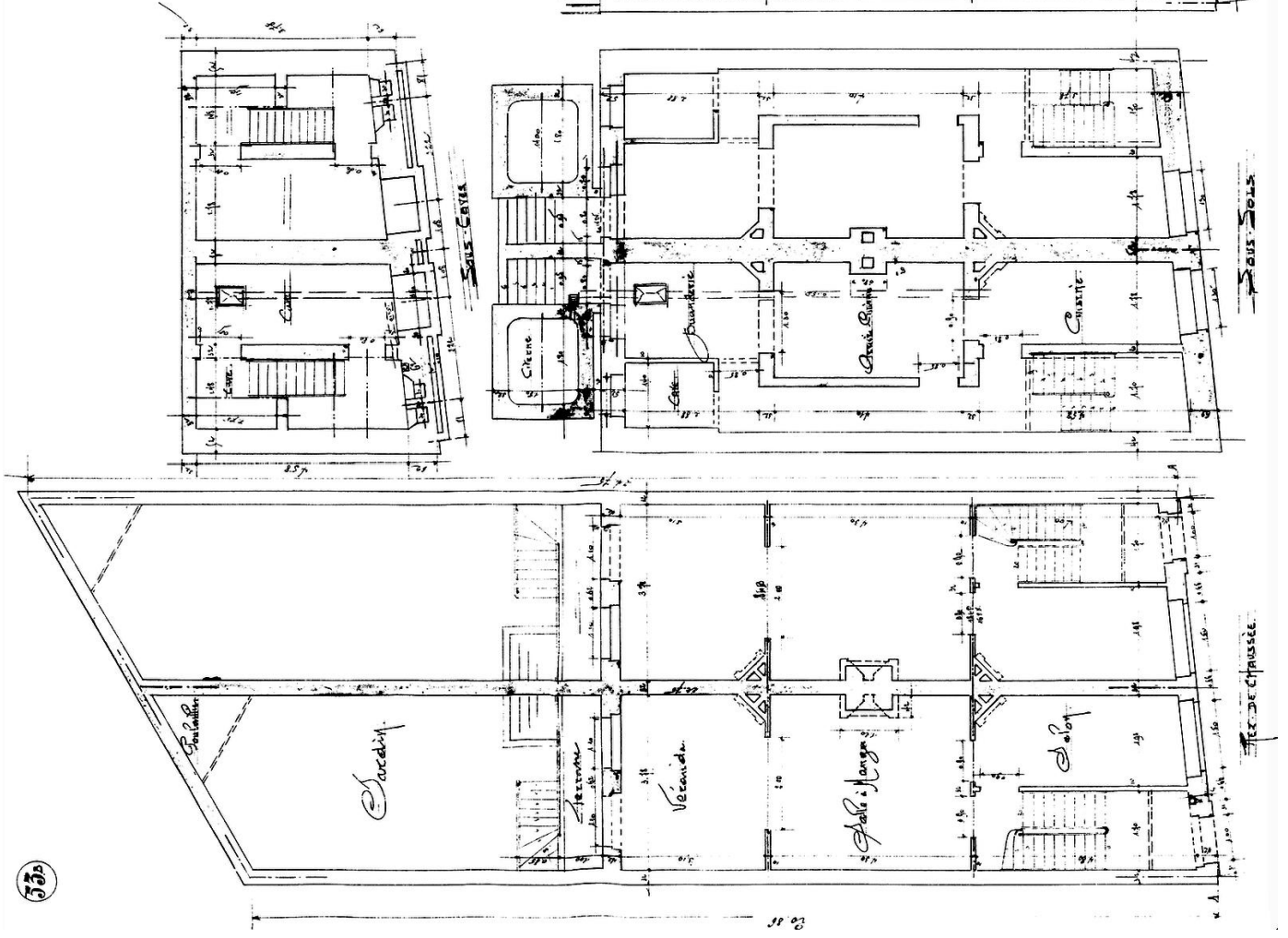


PLANS DE SYNTHÈSE

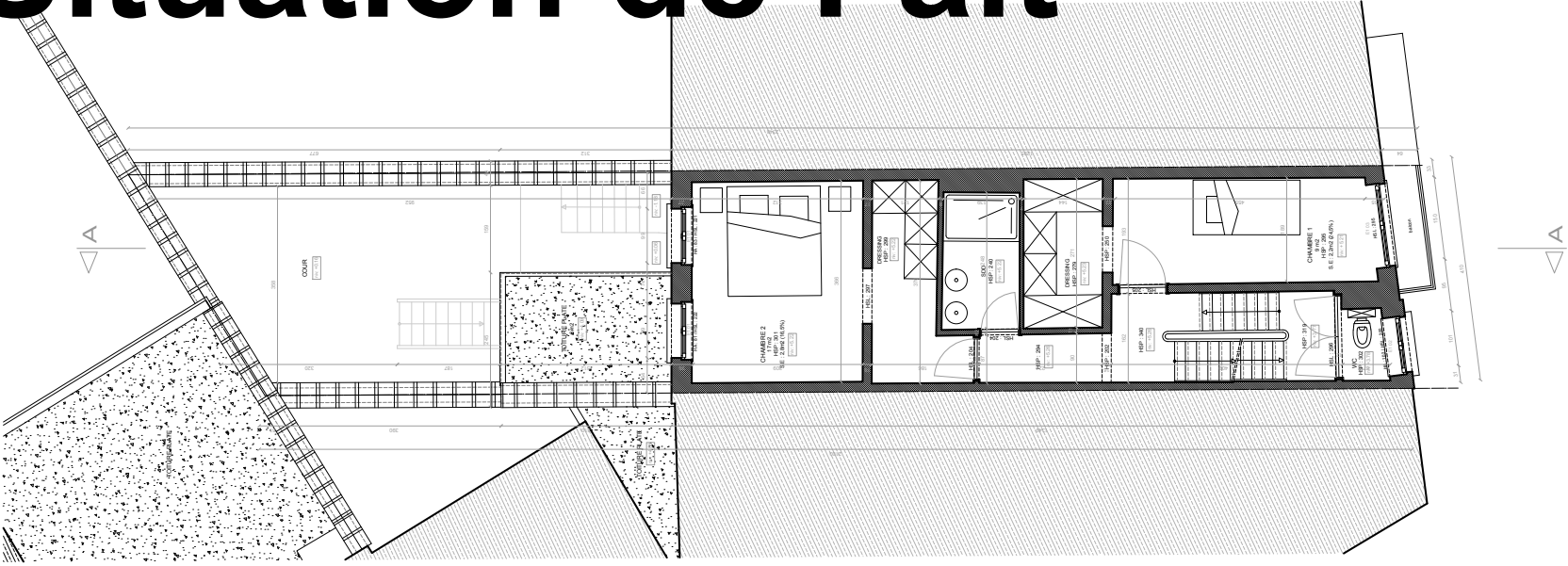


ARCHIVES

PLANS ARCHIVES : 1913

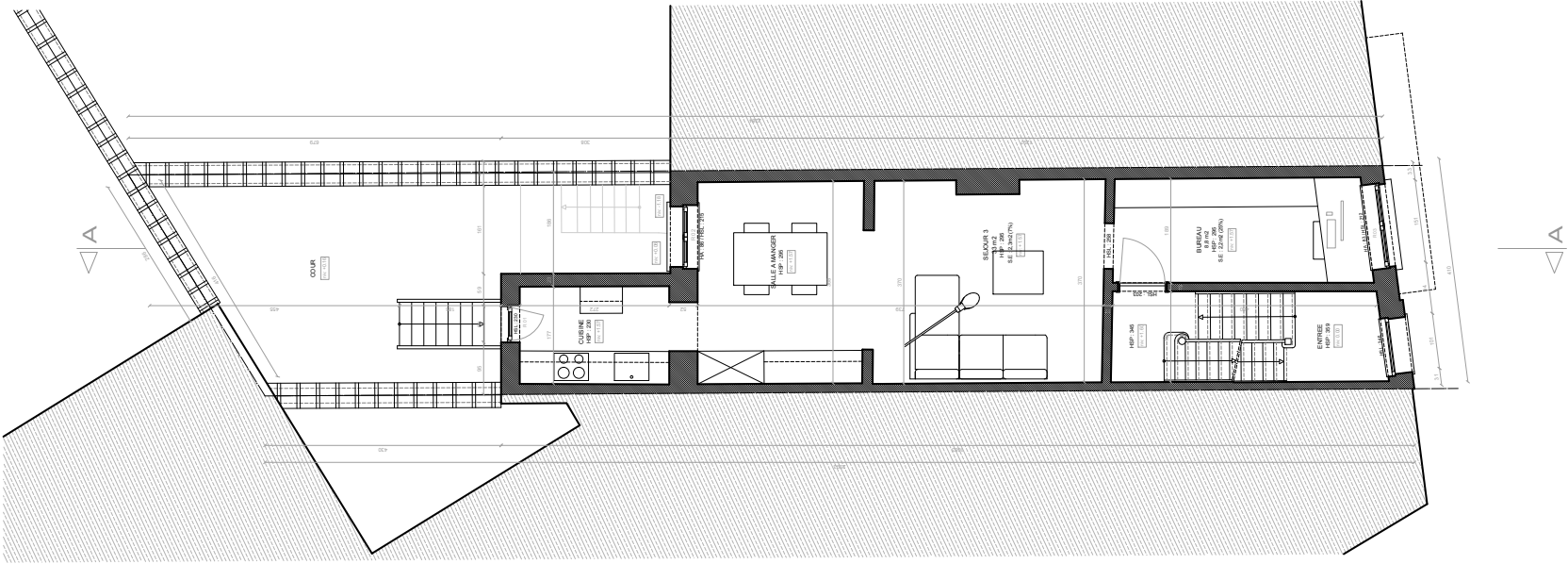


Situation de Fait



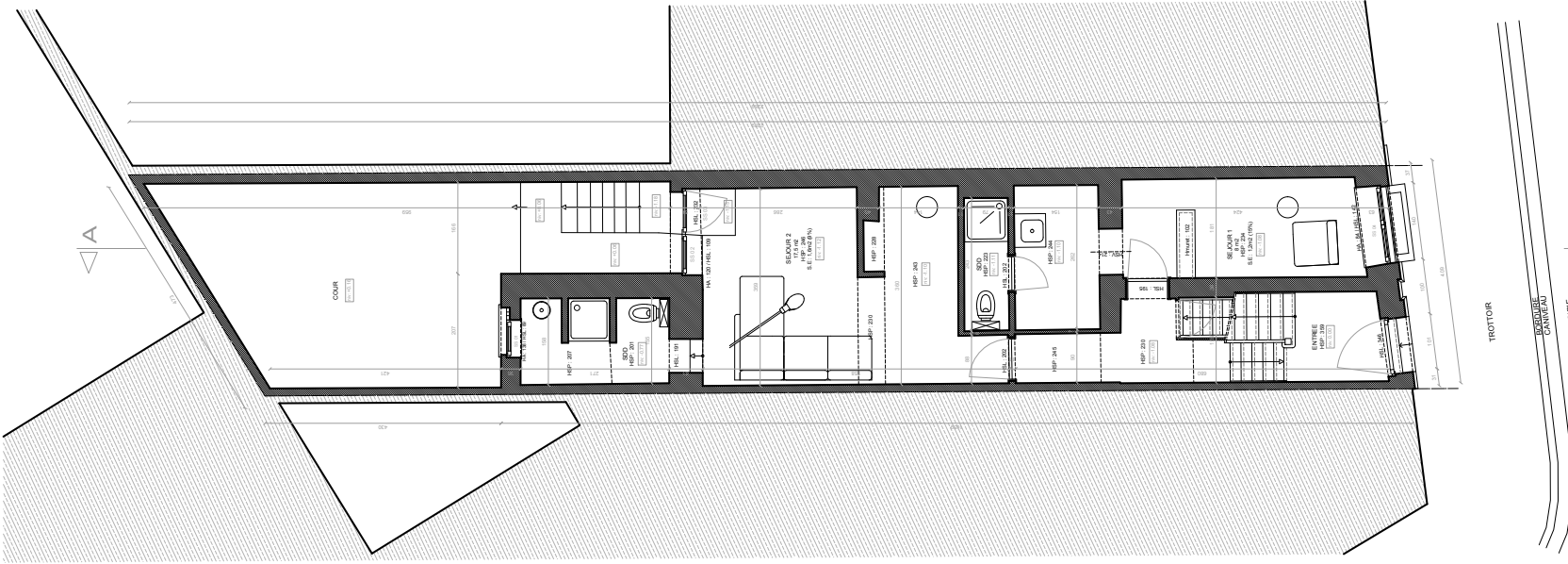
1^{er} ETAGE

Surface Brute : 54 m2



BEL ETAGE

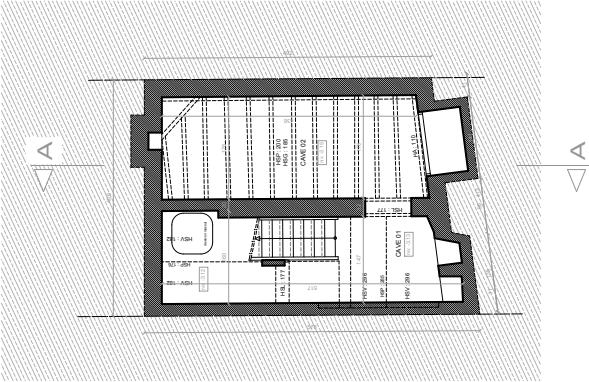
Surface Brute : 61 m2



REZ-DE-CHAUSSEE

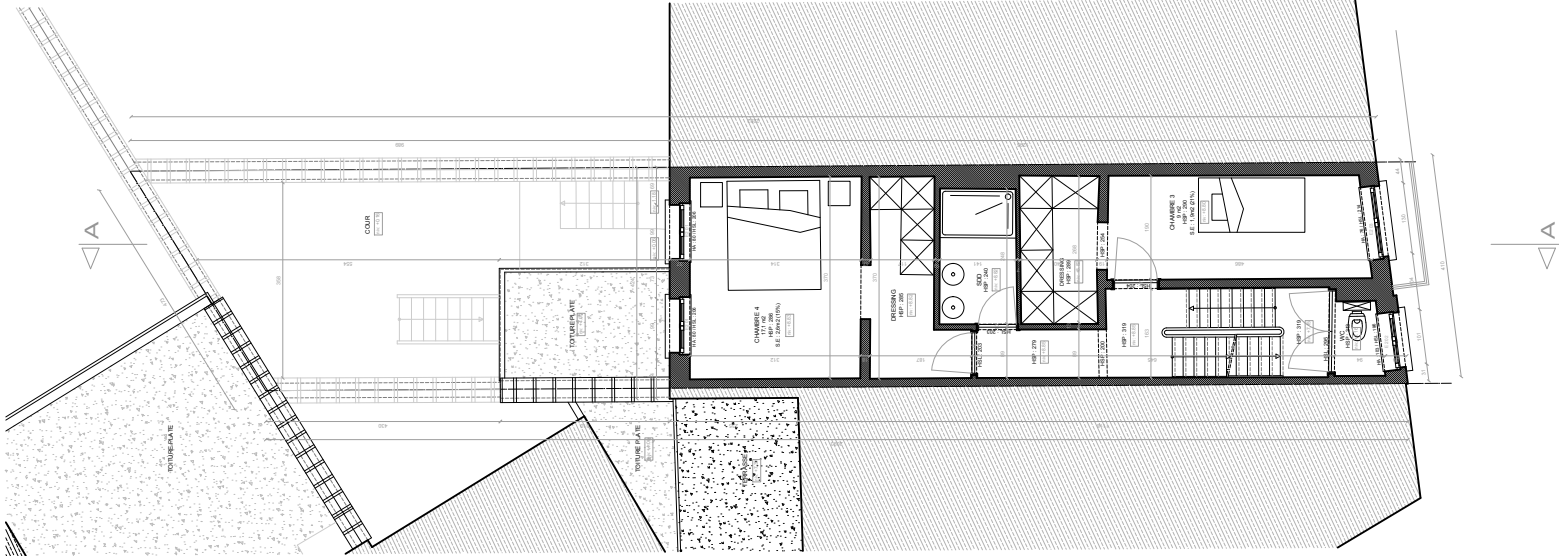
Surface Brute : 61 m2

Surface Parcelle : 89 m2



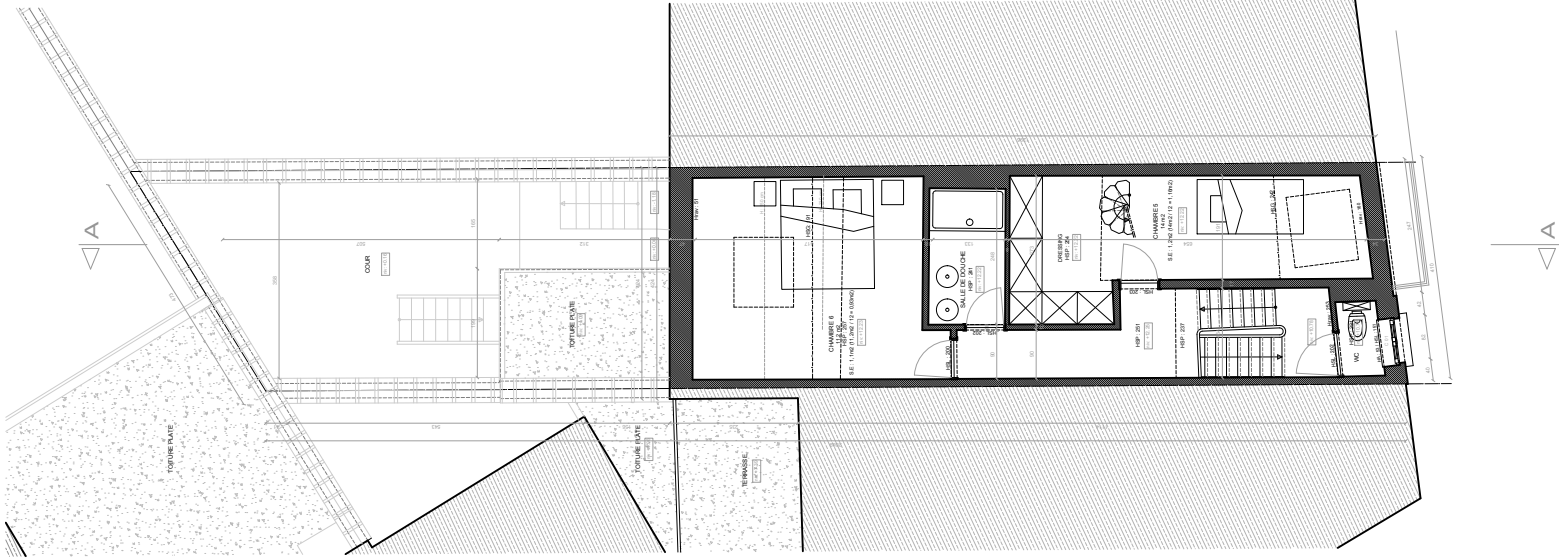
SOUS SOL

Surface Brute : 22 m2



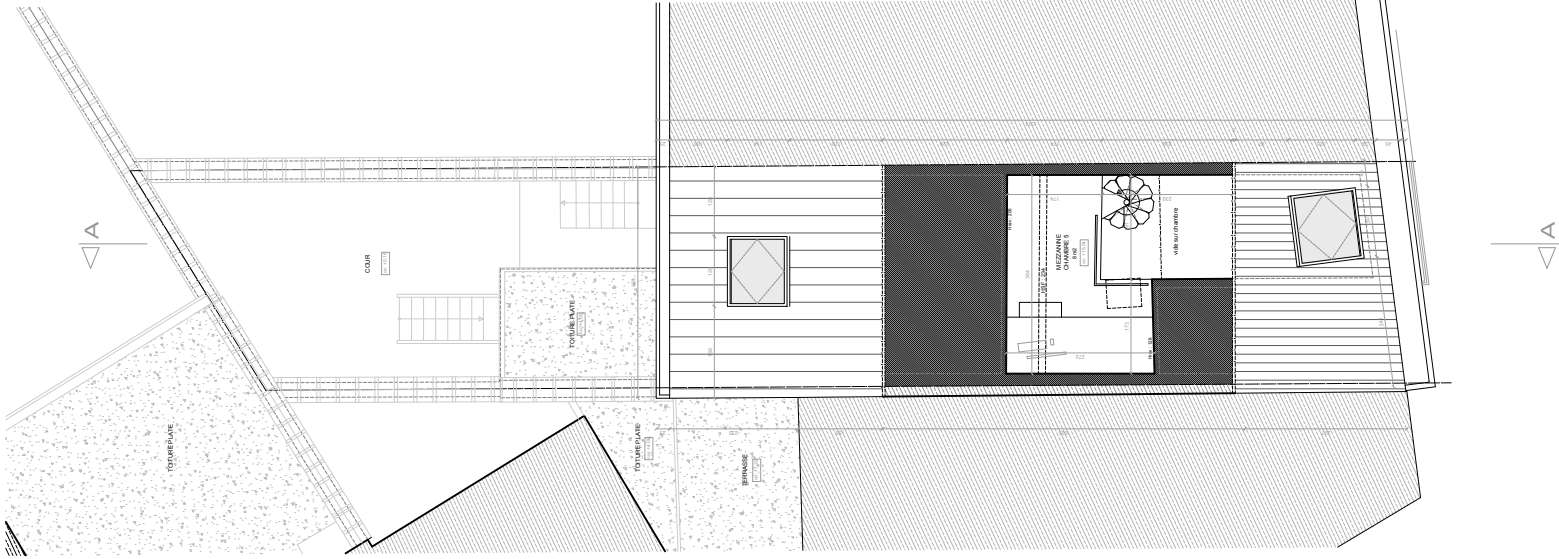
2ème ETAGE

Surface Brute : 54 m2



COMBLES

Surface Brute : 54 m2



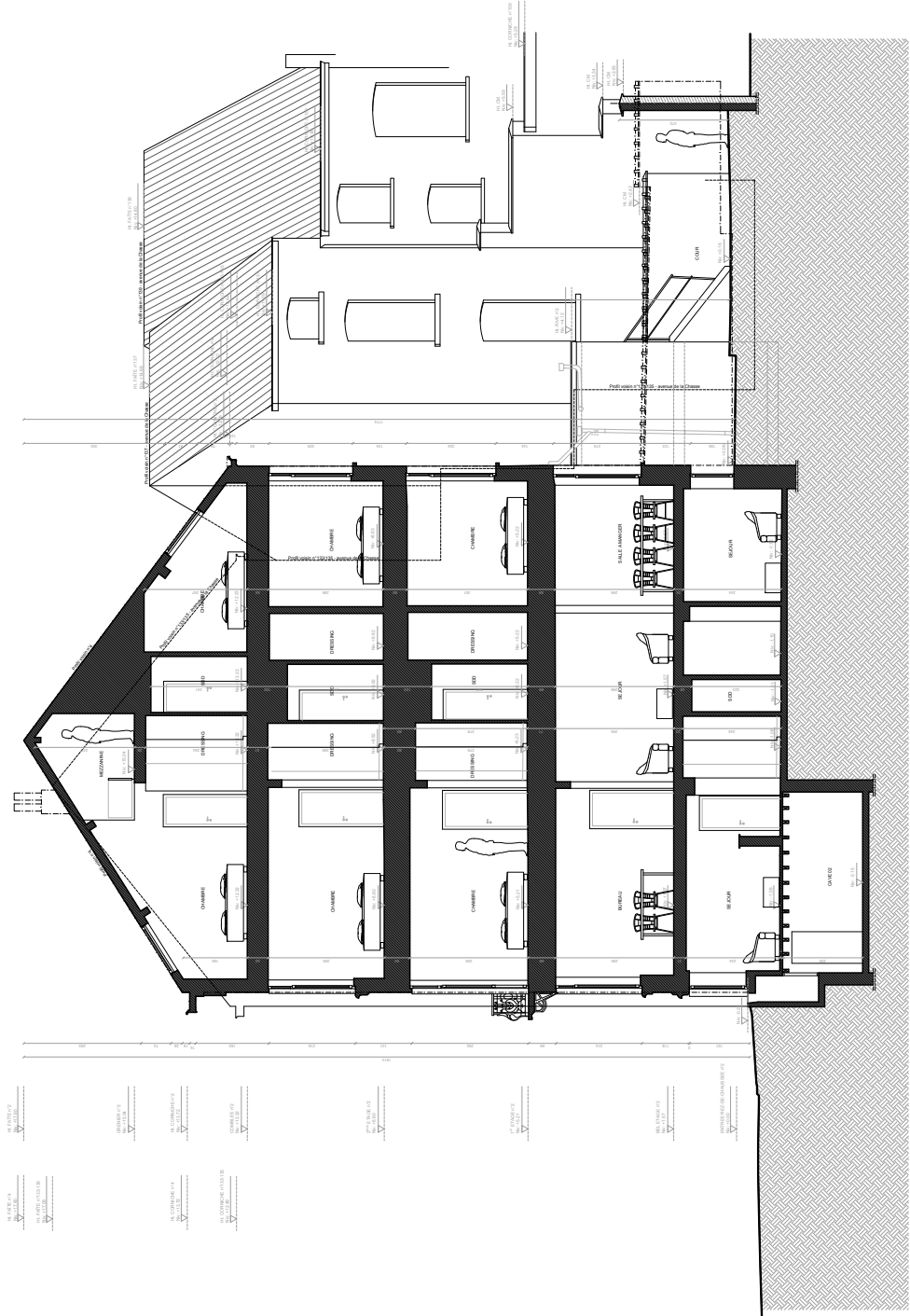
GRENIER

Surface Brute : 18 m2

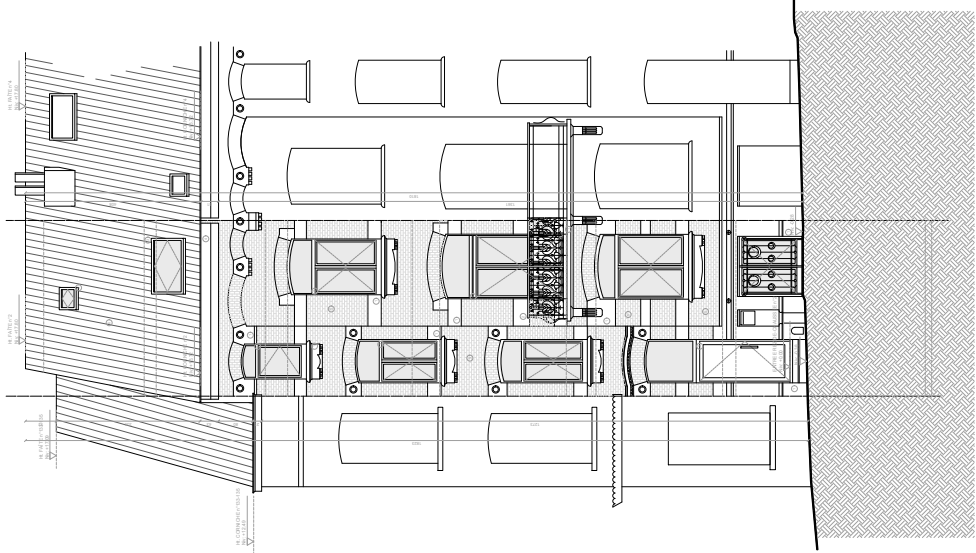


TOITURE

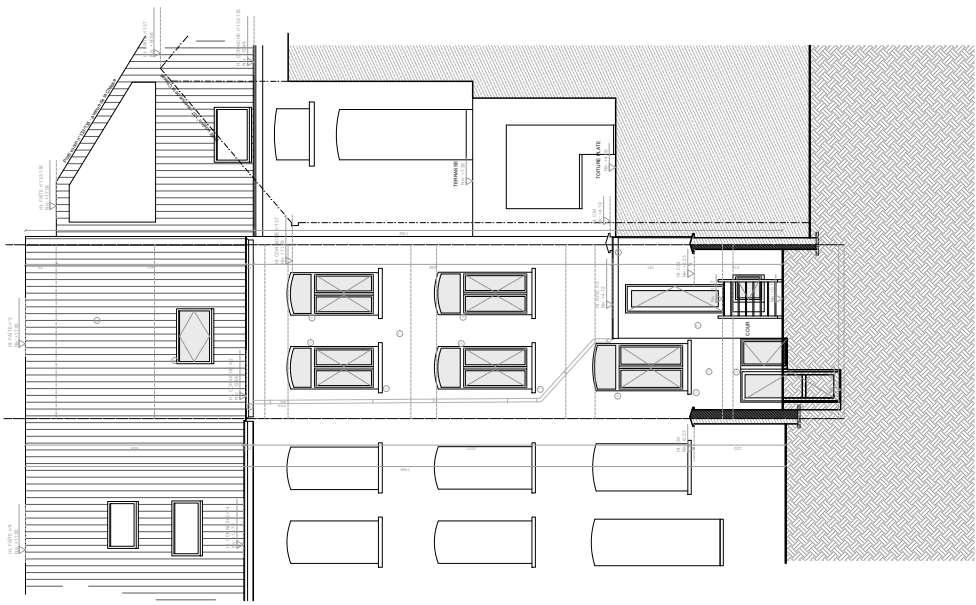
| LEGENDE MATERIAUX | |
|---------------------------------|--|
| 1. Pierre Bleue | |
| 2. Métal noir | |
| 3. Châssis bois teinte brune | |
| 4. Corniche bois teinte blanche | |
| 5. Briques jaunes léger | |
| 6. Tuiles rouges | |
| 7. Enduit blanc cassé | |



COUPE AA

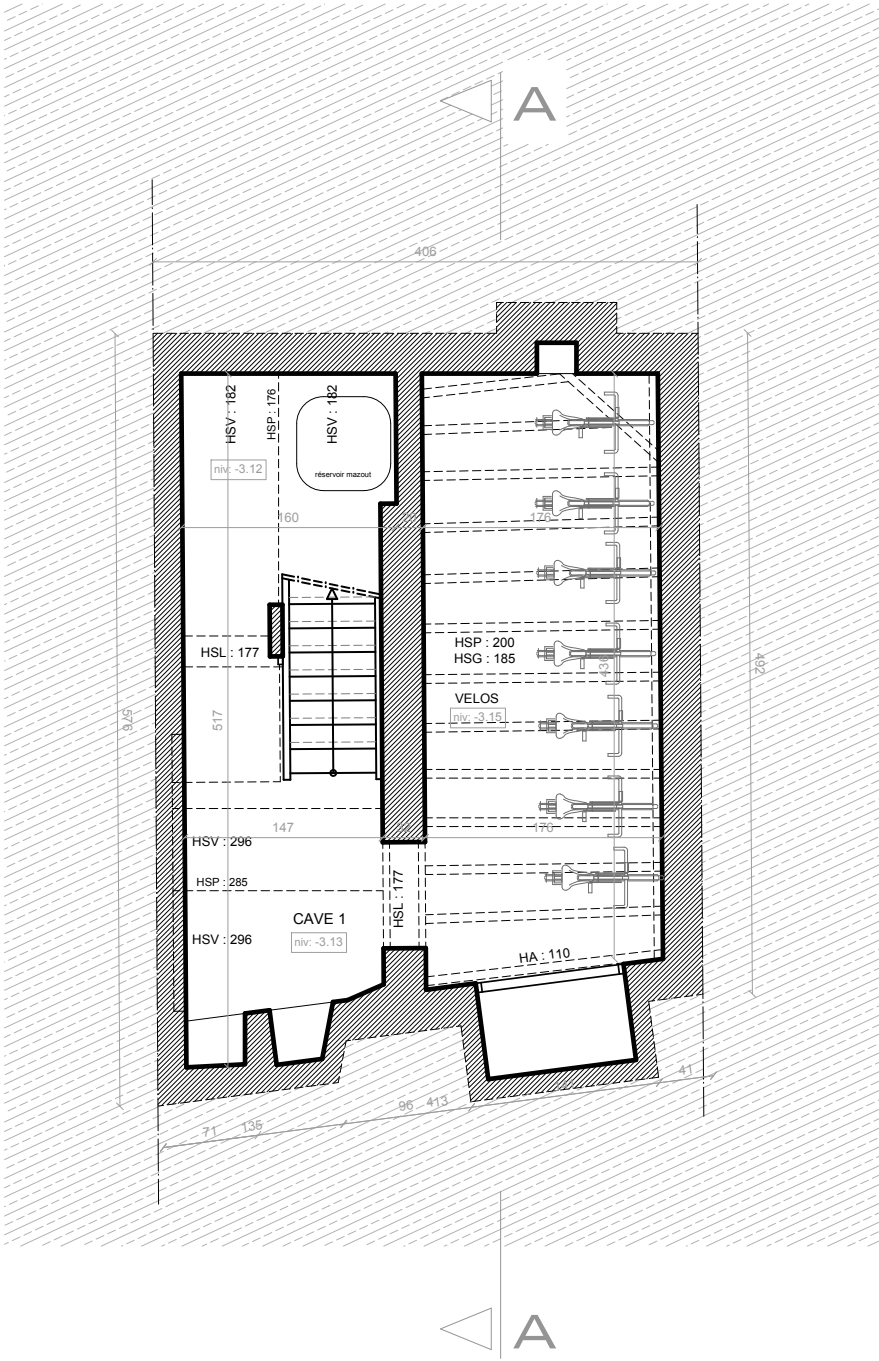


FACADE A RUE



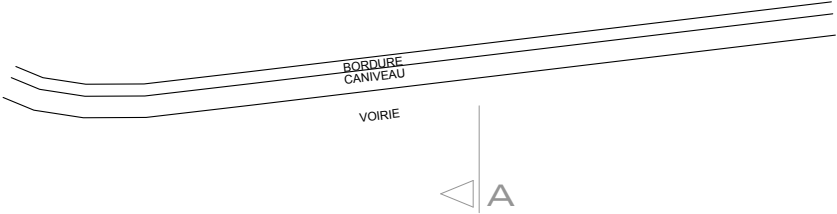
FACADE ARRIERE

PROJET :



SOUS SOL

Surface Brute : 22 m2



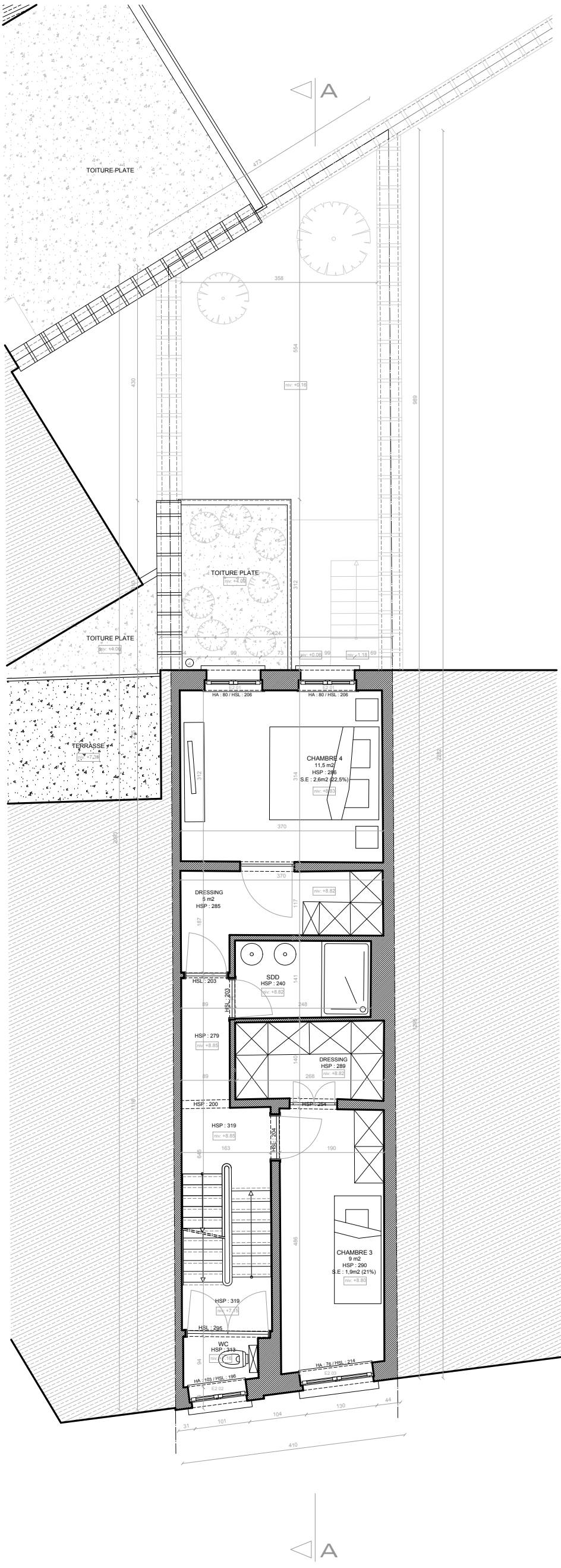
Surface Brute : 61 m2
Surface Parcelle : 89 m2



Surface Brute : 61 m2



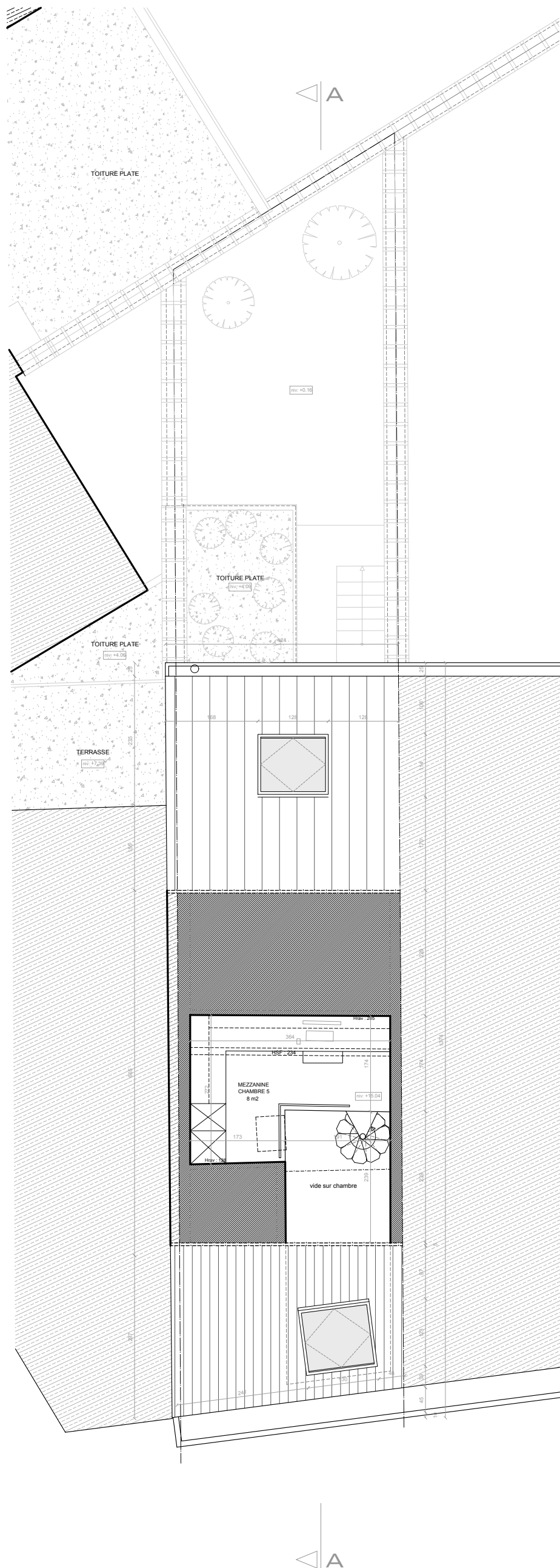
Surface Brute : 54 m2



2^{ème} ETAGE
Surface Brute : 54 m²



Surface Brute : 54 m2



GRENIER

Surface Brute : 18 m²



COUPE AA



FACADE A RUE



FACADE ARRIERE

LEGENDE MATERIAUX

1. Pierre Bleue
2. Métal noir
3. Châssis bois teinte brune
4. Corniche bois teinte blanche
5. Briques jaune léger
6. Tuiles rouges
7. Enduit blanc cassé
8. Profil et maille métallique blanche